

INSTRUCTION SHEET FOR SERVICE REPLACEMENT OF THE PA300 PADDLE SWITCH

SAFETY MESSAGE TO PERSONNEL SERVICING FEDERAL SIGNAL ELECTRONIC SIRENS

WARNING

The lives of people depend on your safe servicing of Federal products. It is important to read and follow all instructions shipped with the products. In addition, listed below are some other safety instructions and precautions you should follow:

- Read and understand all instructions before servicing electronic siren.
- To properly service an electronic siren; you must have a good understanding of automotive electrical procedures and systems, along with proficiency in the installation and service of safety warning equipment.
- Electronic circuit repairs must be performed by a qualified and competent electronic technician.
- Your hearing and the hearing of others, in or close to your emergency vehicle, could be damaged by loud sounds. This can occur from short exposures to very loud sounds, or from longer exposures to moderately loud sounds. For hearing conservation guidance, refer to federal, state, or local recommendations. OSHA Standard 1910.95 offers guidance on "Permissible Noise Exposure."
- All effective sirens and horns produce loud sounds which may cause, in certain situations, permanent hearing loss. You should take appropriate safety precautions such as wearing hearing protection.
- DO NOT connect this system to the positive terminal of the battery until servicing is complete, and you have verified that there are no short circuits to ground.
- In order for the electronic siren to function properly, the ground connection must be made to the fusible link at the front fender between the negative (-) battery terminal and chassis ground.
- After repair, test the electronic siren and speaker system to ensure that it is operating properly.

Failure to follow all safety precautions and instructions may result in property damage, serious injury, or death to you or others.

This instruction sheet provides instructions for replacing the paddle switch, Part No. 122358, into a rectangular chassis cutout.

NOTE

Observe ESD precautions when servicing the PA300.

1. Remove the PA300's cover.
2. Prior to disassembly, make note of the location of all power, ground, microphone, and four terminated wire harnesses plugged into the PCB assembly. Also note the top, center (typical- orange) and bottom wire colors connected to the paddle switch.
3. Unplug the cables and remove the printed circuit board (PCB) assembly by squeezing each corner standoff.
4. Unsolder and remove the old paddle switch.
5. See figure 1. Using a file or Dremel tool, remove approximately 0.040" material on each vertical side of the paddle switch opening. Be sure to remove any burrs or sharp points. Also, use an air compressor to blow out any metal filings.
6. Insert the new switch and secure with the mounting nut.
7. Solder switch leads with the same wire color orientation as the original paddle switch.
8. Snap in the PCB assembly. Plug in power, ground, microphone, and four terminated wire harnesses.
9. Test for proper operation.
10. Replace the cover on the unit.

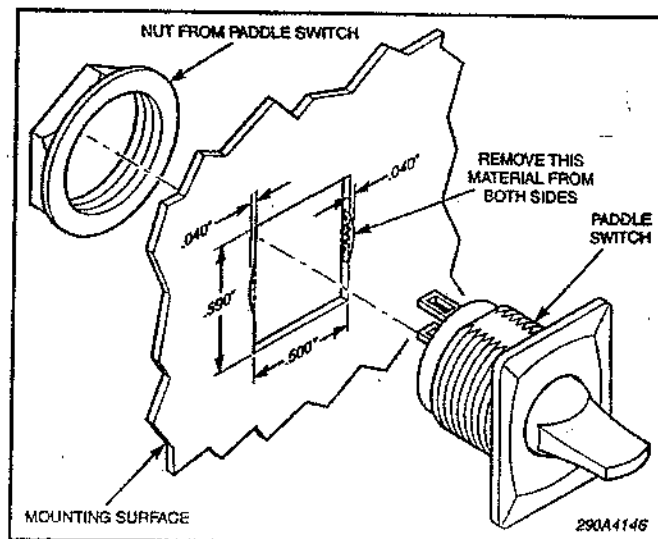


Figure 1.