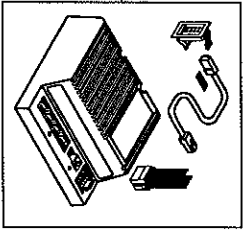
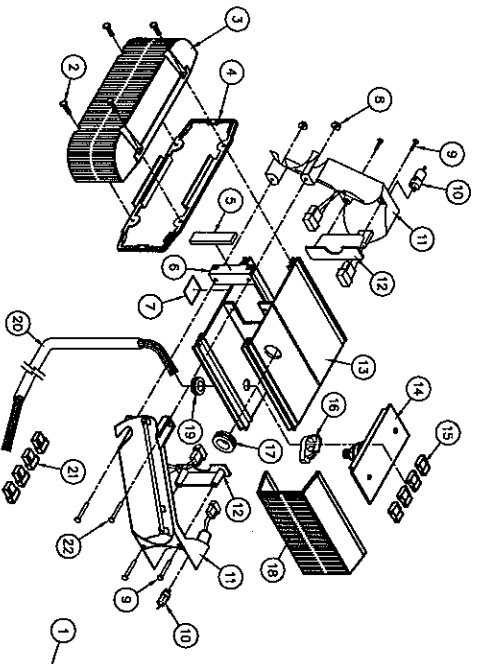
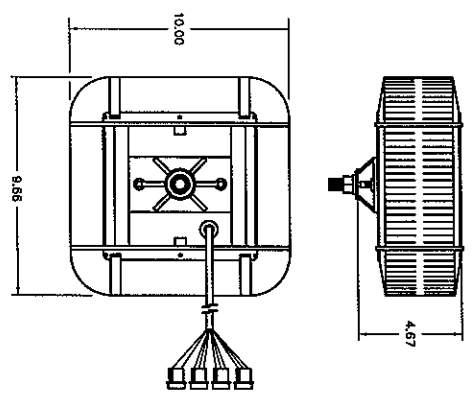


LEFT AND RIGHT ASSEMBLIES OF (1) LIGHTHEAD PARTIAL ASSEMBLY OF (1) LIGHTHEAD

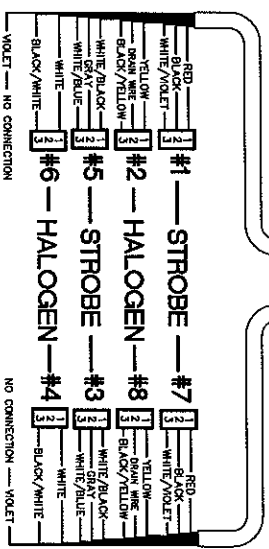
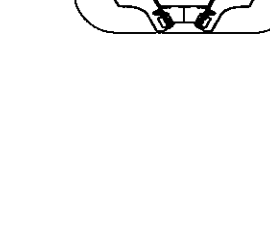
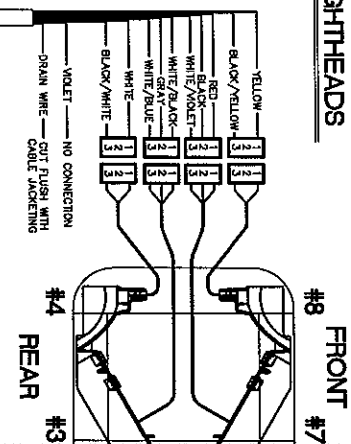
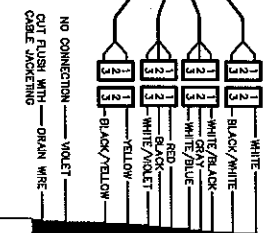
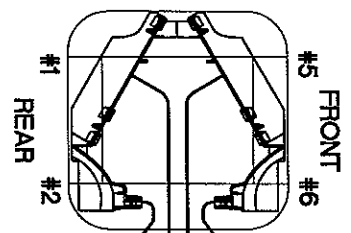


SEE DRAWING # 62739 FOR POWER SUPPLY SPECIFICATIONS.

WARNING
 ALL CUSTOMER SUPPLIED WIRING MUST BE CONNECTED TO THE POSITIVE TERMINAL OF THE BATTERY. THE BATTERY SHOULD BE SUPPLIED AT LEAST 125% OF THE MAXIMUM OPERATING CURRENT AND FUSED "AT THE BATTERY" TO CARRY THAT LOAD.



TOP VIEW OF LIGHTHEADS



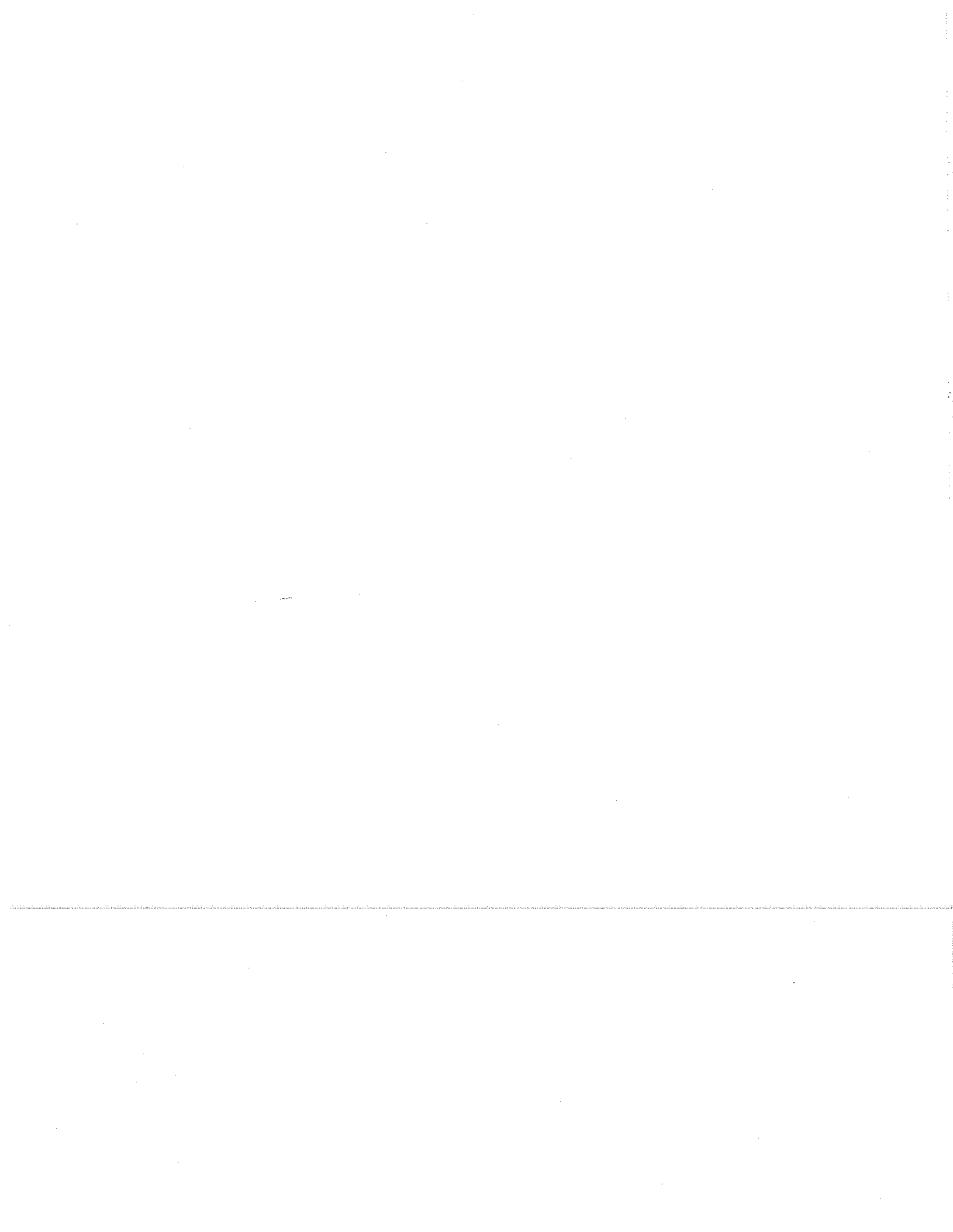
2	22	14-062278-120	SCREW, 6-32 X 3/4, PHNS
4	21	39-0403013-04	HOUSING, AMP 3 FIN
1	20	48-0742850-25	CABLE ASSEMBLY, 11/2" W/PINS & SOCKETS
1	19	21-1132404-0	BROWN, 3/4"
2	18	68-1183080610	LENS, AMBER (S.560*)
1	17	21-11263204-0	GROUND, 1.00"
1	16	28-0121003-01	CLAMP, CABLE (SIC-28)
4	15	39-0403023-04	HOUSING, AMP 3 SOCKET
1	14	02-0381323095	EXTRUSION, MICRO-EDGE "SNF"
1	13	11-342643-000	BRACKET, LIGHTHEAD MOUNTING
2	12	07-241014-000	STROBE ASSEMBLY, MICRO EDGE "SNF"
2	11	02-0343022-04	AMP/HOLDER ASSEMBLY (12V-20V)
2	10	34-0041897-04	4" X 1" PINS/MS (W/SHR HEAD)
2	9	15-04181-160	4" X 3/8" WHIZ NUT
2	8	15-042111-053	4" X 3/8" WHIZ NUT
1	7	10-032078-00	LABEL, MADE IN USA*
1	6	07-242176-000	BRACKET, "T" BEAM CENTER
1	5	38-0318275-000	BRACKET, 1/4" BEM X 3/8" W X 2 3/8" LONG
2	4	39-0261151-000	DRIVER, AMBER
2	3	68-1181828-10	DRIVER, AMBER
2	2	14-104288-163	10-24 X 1" TORX HEAD
REF	1	01-0682799-01	POWER SUPPLY, MODEL SN#4480 WITH DIAG

2	22	14-062278-120	SCREW, 6-32 X 3/4, PHNS
4	21	39-0403013-04	HOUSING, AMP 3 FIN
1	20	48-0742850-25	CABLE ASSEMBLY, 11/2" W/PINS & SOCKETS
1	19	21-1132404-0	BROWN, 3/4"
2	18	68-1183080610	LENS, AMBER (S.560*)
1	17	21-11263204-0	GROUND, 1.00"
1	16	28-0121003-01	CLAMP, CABLE (SIC-28)
4	15	39-0403023-04	HOUSING, AMP 3 SOCKET
1	14	02-0381323095	EXTRUSION, MICRO-EDGE "SNF"
1	13	11-342643-000	BRACKET, LIGHTHEAD MOUNTING
2	12	07-241014-000	STROBE ASSEMBLY, MICRO EDGE "SNF"
2	11	02-0343022-04	AMP/HOLDER ASSEMBLY (12V-20V)
2	10	34-0041897-04	4" X 1" PINS/MS (W/SHR HEAD)
2	9	15-04181-160	4" X 3/8" WHIZ NUT
2	8	15-042111-053	4" X 3/8" WHIZ NUT
1	7	10-032078-00	LABEL, MADE IN USA*
1	6	07-242176-000	BRACKET, "T" BEAM CENTER
1	5	38-0318275-000	BRACKET, 1/4" BEM X 3/8" W X 2 3/8" LONG
2	4	39-0261151-000	DRIVER, AMBER
2	3	68-1181828-10	DRIVER, AMBER
2	2	14-104288-163	10-24 X 1" TORX HEAD
REF	1	01-0682799-01	POWER SUPPLY, MODEL SN#4480 WITH DIAG

REV	EN	DESCRIPTION	DATE
A	31692	ADD ITEM #22	11/7/05
		CHG P/S TO REV	

REV	EN	DESCRIPTION	DATE
		ADD ITEM #22	12/7/98
		CHG P/S TO REV	

REV	EN	DESCRIPTION	DATE
		ADD ITEM #22	12/7/98
		CHG P/S TO REV	



01/12/06
bbouchar

WHELEN ENGINEERING COMPANY
BILL OF MATERIAL PARTS LIST

BOM NUMBER: 01-0683305-A0A JOB NUMBER: CLASS: ACTIVE DISPLA
ASS'Y, SNF MICRO EDGE AMBER/W/O MIRROR BRACKET

COMPONENT PARTS AND DESCRIPTIONS	PER UNIT	L/
00-0000000-000 HOURLY LABOR RATE	0.2500	
02-0363022-000 ASS'Y, SNF STROBE REFLECTOR JOB 99116	2.0000	
02-038132309SM ASS'Y, 1/2" MOUNTING BRACKET JOB 99004 SLIDE BOLT	1.0000	
07-241014-000C BRACKET, LIGHTHEAD MOUNTING WIDE C SECTION	2.0000	
07-242198-000A BRACKET, "I" BEAM CENTER EDGE SERIES	1.0000	
10-0320776-00A * LABEL, MADE IN USA FLAG	1.0000	
11-342643-000A EXTRUSION, 5.50 SNF MICRO EDGE FROM 54-160421-024	1.0000	
13-062111-0530 NUT, 6-32 X 5/16 WHIZ LOCK STEEL ZINC PLATED	2.0000	
14-062216-1200 SCREW, 6-32 X 3/4 PPHMS SS STOCKED FLOOR 1	2.0000	
14N104286-16JA * SCREW, 10-24 X 1.25" TX PHD SWADGE FORM 1/4"LEAD 1"THREAD	8.0000	
15-041816-1600 SCREW, 4 X 1 PP WASHER HDSMS THD FRM SS TYPE B	4.0000	
21-11202404-00 GROMMET, RUBBER SHORLINE #123 .625 ID .750 GROOVE DIA. (PAC)	1.0000	
21-11263204-00 * GROMMET, 1" SLIM LINE	1.0000	
26-0121053-01B CLAMP, 7/16" MODEL 9308	1.0000	
34-0041987-04T ASS'Y, 12V/20W SNAP-IN LAMP JOB 2690	2.0000	
38-0261131-00K * GASKET, ENDCAP 9000 SERIES	2.0000	
38-0316275-000 GASKET, REAR EXTRUS 50' ROLL 1/4" X 3/8" PSA ONE SIDE	1.0000	
39-0403013-040 HOUSING, 3 POS PIN PANEL MOUNT COMM MATE-N-LOK	4.0000	
39-0403023-040 HOUSING, 3 POS SOCKET COMM MATE-N-LOK	4.0000	
46-0742650-250 ASS'Y, 11/C 25' CABLE SEE DWG STRIP BOTH 6"/61117-1/61118-1	1.0000	
68-1181528-10C ENDCAP, AMBER NO CUTOUT EDGE 9000	2.0000	
68-1183080610F LENS, AMBER/OPTIC 5.5" FROM 68-118147551A	2.0000	